

December 2015 - Marinex Construction left a pipeline on the bottom of the Beaufort Inlet seafloor this past summer while conducting maintenance work at the Morehead City Harbor (mainly [the cutoff and Range A](#)). This work included a pipeline dredge that delivered sand to scows/barges; and the scows were subsequently towed offshore to the nearshore berm and dumped. The pipe has been buried within the past few months by shoal material; and in order to retrieve the submerged pipeline, it is estimated that [Marinex Construction](#) will be removing a total of ~150,000 cubic yards of sand laying on top of the pipe and additional material the Corps of Engineers has funded to be excavated. All dredged shoal material will be placed along the beach at Ft. Macon as depicted in Figure 1 below. Figure 2 is compliments of [Geodynamics](#) and represents a high-resolution bathymetry image of the pipe lying down in the channel and shoal material that has migrated from the east and over the middle section of pipe.

Photo Gallery (12/3/15) – Click [HERE](#)

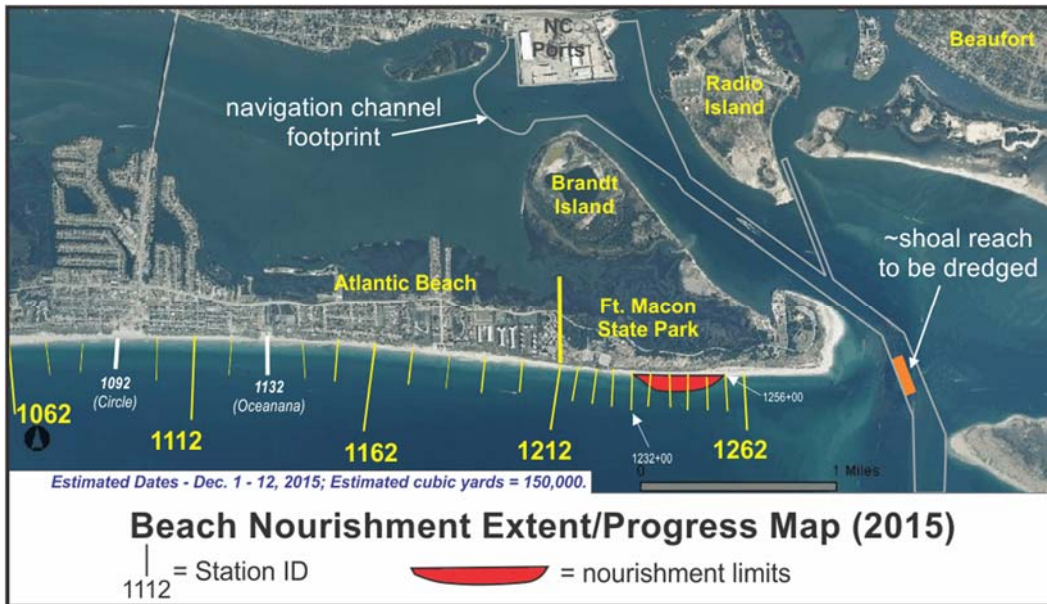


Figure 1

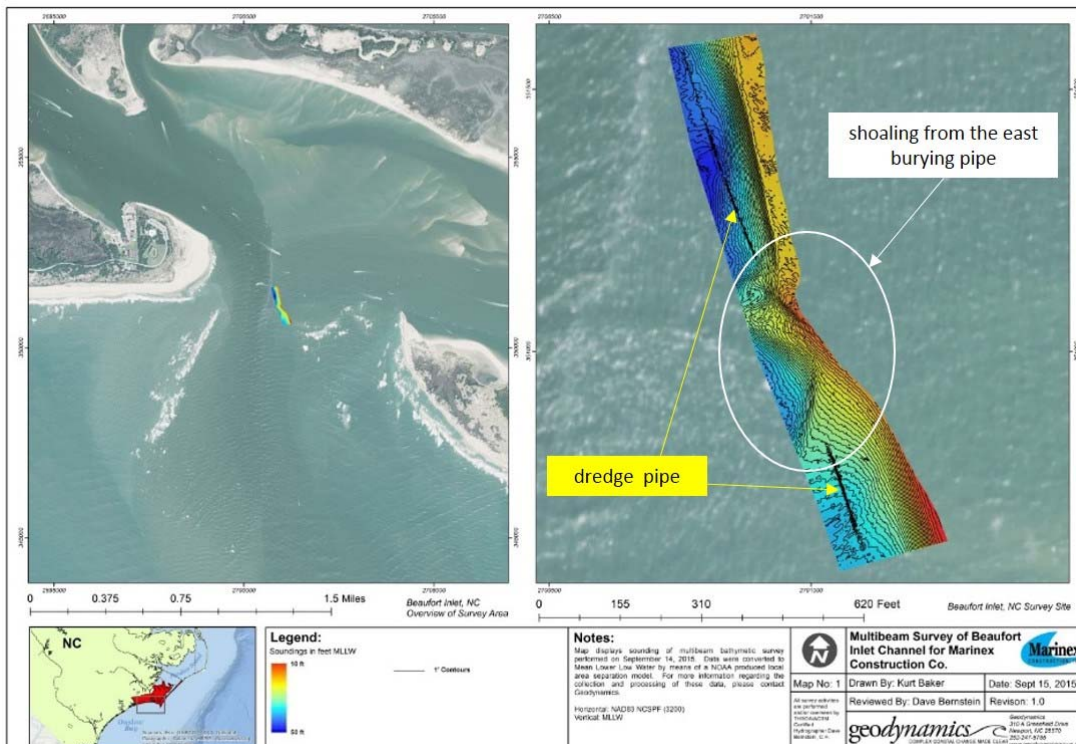


Figure 2